

Keele's Important New Evidence Service (KINES)

Optum® and Keele University's Centre for Medicines Optimisation are partnering to provide ScriptSwitch® users with exciting new benefits.

Evidence based approach

Keele's Important New Evidence Service (KINES) is a concise round-up of developments and findings in key areas of primary care prescribing. The Keele Centre for Medicines Optimisation (KCMO) scans alert services for updates to national guidance, new or updated clinical evidence, and other salient new items. Findings are then distributed by Optum to the CCG medicines management teams via an easy-to-read e-newsletter and occasional profile messaging and switch recommendations within the Library Tab of ScriptSwitch's Content Manager 2.0. KINES also gives you access to a dedicated website with an extensive content library. Containing new and archived material, the KINES library is a valuable resource for all prescribing and content updates.

Prescriber benefits

This new service allows CCGs and Health Boards to continue to offer GPs information at the right time to keep them informed about the latest drug updates and clinical evidence.

Providing GPs with access to a simple and reliable informational resource better engages them in their case health management which leads to improved patient care.

The medicines management teams will benefit from added value and efficiency in decision making with their prescribers and medicines optimisation.

Why Keele University?

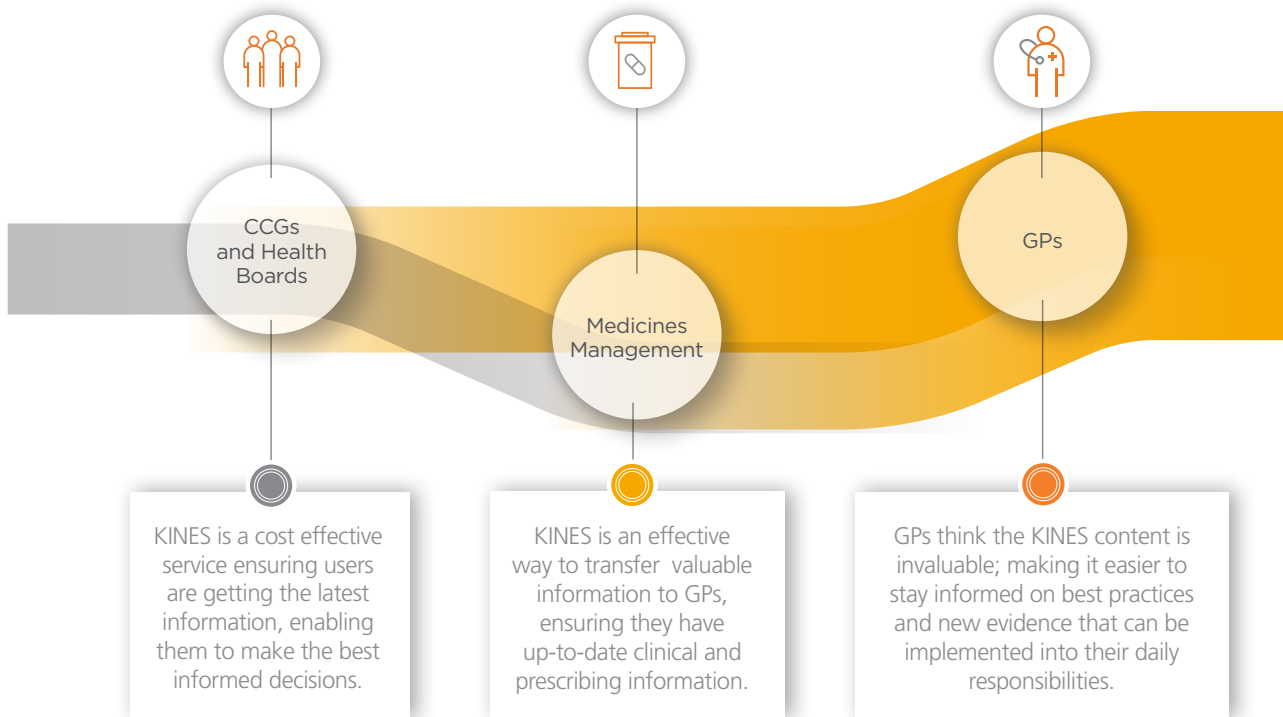
Keele University's not-for-profit Centre for Medicines Optimisation has been providing outstanding tailored, cost-effective prescribing support solutions to the NHS for over 20 years, sharing our values of providing improved patient care.

Keele's Centre for Medicines Optimisation (KCMO) has built an exceptional foundation to regularly publish its work in reports, articles, respected industry journals and national conferences.

Optum and KCMO have also been jointly awarded a place on Lot 2A of NHS England's Lead Provider Framework covering medicines management and optimisation commissioning support services.



Stakeholder value



Feature details

Important new content

KINES provides you with important new content on the most current information around drug updates, clinical evidence and guidelines. This new content is distributed by Optum to medicines management teams via an easy-to-read e-newsletter providing them with occasional profile messaging and switch recommendations. The information in the e-newsletter comes directly from various trusted sources including NICE, MHRA and DoH and are succinctly summarised by Keele to help customers keep track of recommendations. Customers with access to KINES can benefit from staying up-to-date on current clinical evidence.

A dedicated KINES content library

KINES gives you access to a dedicated website with an extensive content library containing live and archived content. This includes searchable access to past KINES content with all KINES clinical update newsletters readily available in one place. The library also contains an archive of National Prescribing Centre (NPC) and Midlands Therapeutics Review and Advisory Committee (MTRAC) resources and the KINES user discussion forum. For more information, visit centreformedicineoptimisation.co.uk

Improved decision making

Making it easy for GPs to have access to information at their fingertips, helping them stay up-to-date with the latest clinical evidence and deliver efficient patient care.

Our goal is to make the latest prescribing information available in a variety of formats such as e-newsletters as well as point of prescribing pop-ups to make it easier for you.

Updates on national guidelines and clinical evidence

The KCMO scans alert services from trusted institutions, including NICE, MHRA and DoH, for updates to national guidance, new or updated clinical evidence, and other salient new items.

All key findings are then summarised and interpreted to provide clear indications of where actions or changes in practice are required, or any impacts on prescribing. These findings and updates will be included in the monthly e-newsletters.

Powered by Content Manager 2.0

The medicines management teams will be notified via email when new KINES content has been made available within the Digital Library and can then adopt these new messages into their profile from new features available in the Library Tab.



T 020 7121 0560 | E info@optum.co.uk | optum.co.uk
10th Floor, 5 Merchant Square, Paddington, London, W2 1AS

Optum® is a registered trademark of Optum, Inc. in the U.S. and other jurisdictions. All other brand or product names are trademarks or registered marks and the property of their respective owners. Because we are continuously improving our products and services, Optum reserves the right to change specifications without prior notice. Optum is an equal opportunity employer.

© 2017 Optum, Inc. All rights reserved. UK1315_02.03.2017